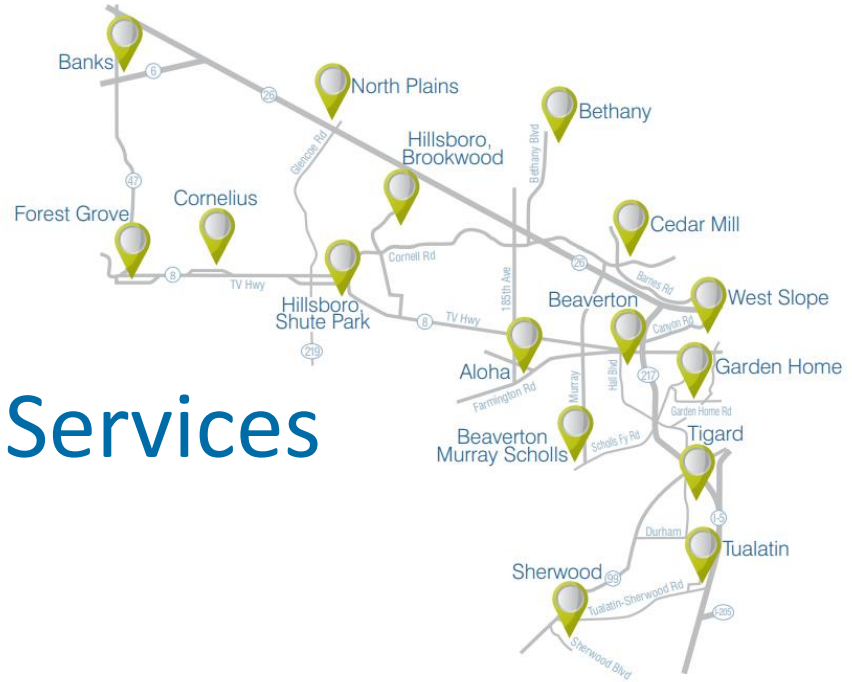


Washington County Cooperative Library Services

January 2020



WCCLS member libraries

Aloha Community

City of Banks

City of Beaverton (2 locations)

Cedar Mill Community (2 locations)

City of Cornelius

City of Forest Grove

Garden Home Community

City of Hillsboro (2 locations)

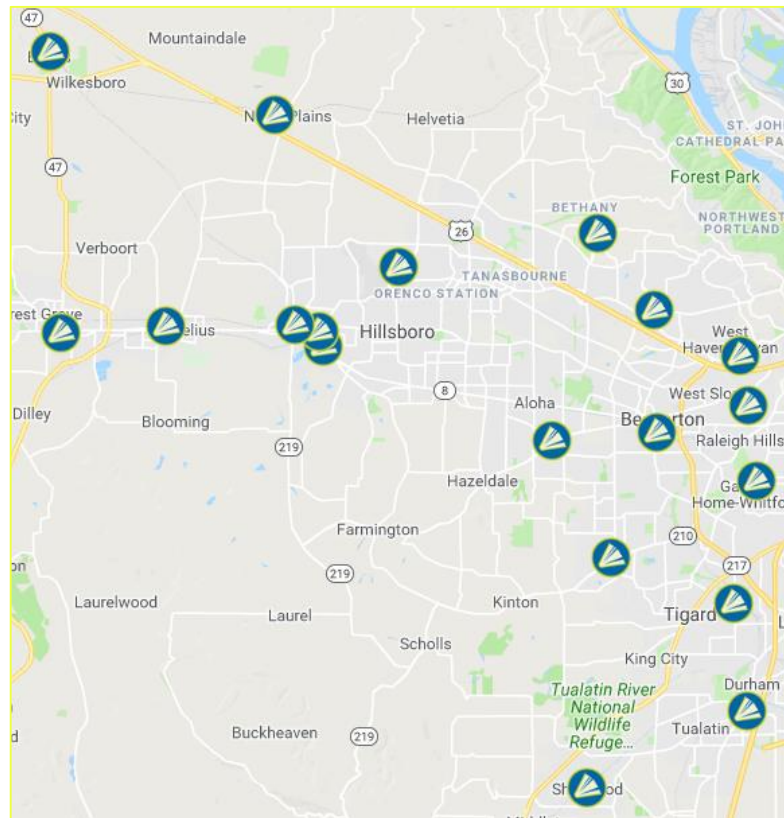
City of North Plains

City of Sherwood

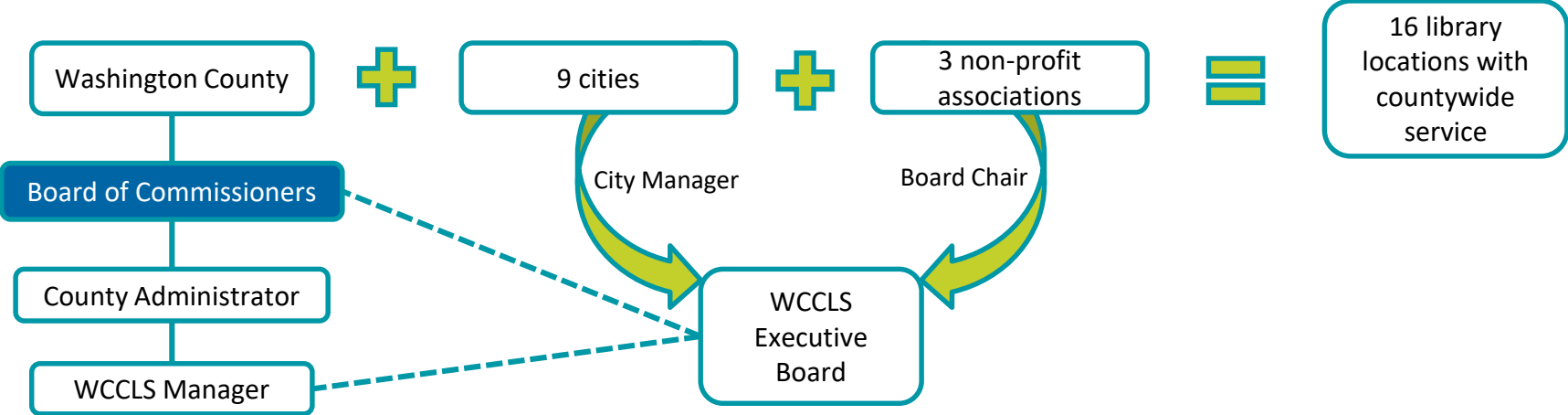
City of Tigard

City of Tualatin

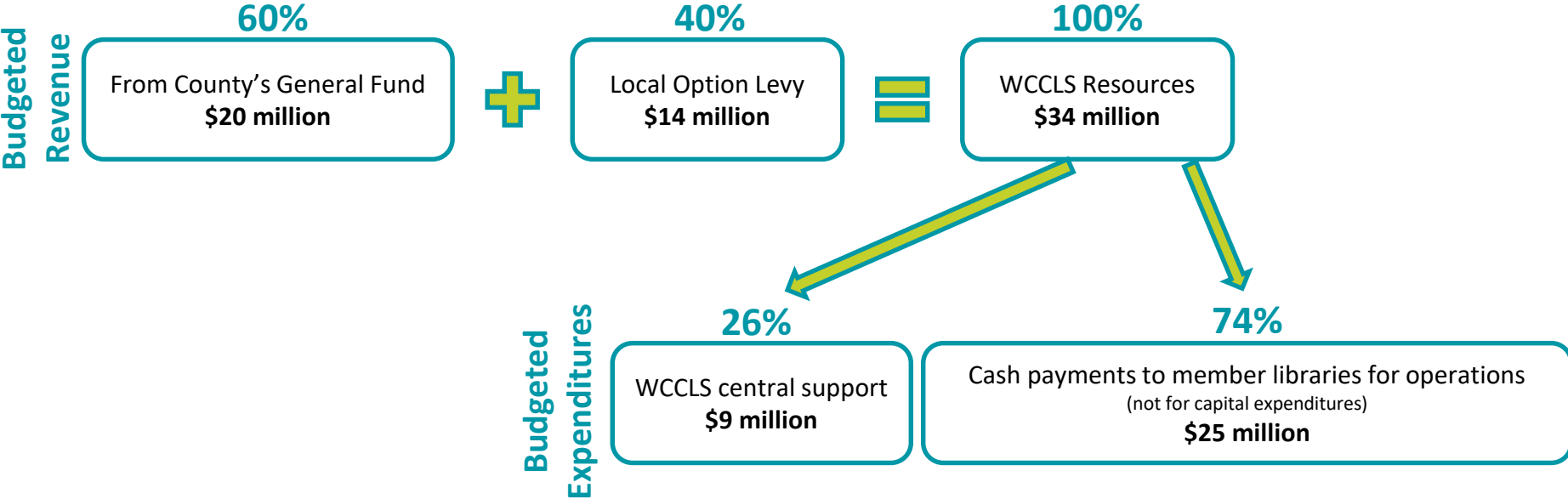
West Slope Community



Cooperative governance



Current revenue and expenditures (FY19-20)



History of the Cooperative's funding

1976: Library cooperative was **founded and funded** entirely by a voter-approved levy

1998: Measure 50 was passed by voters, which **rolled all pre-existing countywide levies into the County's permanent tax rate. This revenue is now reflected in the General Fund.** The County honored the voters' original intent, and continued to distribute funding to libraries from the County's General Fund.

1998 - 2007: 100% of WCCLS revenue came from General Fund distribution and spending from WCCLS' reserves

2002: Levy was on ballot and not approved by voters

2004: Levy got majority support, but not a majority of voters turned out, so levy failed

2006: First local option levy for library funding passed after two previous levies failed

2007 - present: 40% of funding comes from the levy

Structure of funding to member libraries

- Distribution formula and amounts are stable for each year of the levy cycle and set down in 5-year intergovernmental agreements (currently FY16-17 through FY20-21)
- WCCLS Executive Board works with WCCLS/County on funding distribution
- Next 5 year cycle is FY21-22 through FY25-26
- Executive Board will discuss funding distribution for next cycle starting in late 2020

Funding distribution to libraries

Pool 1: Primary Funding

If countywide assessed value increases by at least 3%, WCCLS will increase libraries' primary funding distribution by 3% each year of the current levy cycle.

Jump Start Operating Fund

Libraries that are increasing publicly accessible square footage in their library (expansion or new build) can apply for these funds, which are held separately from Pool 1.

These funds support operating expenditures for expansions; they are not used for capital projects. The WCCLS Executive Board evaluates applications once a year.

Pool 2: Possible Additional Revenue

Once WCCLS' actual (rather than projected) revenue is known, and once we have fully funded Pool 1 and Jump Start, we *may* be able to distribute a small pool of additional funds to libraries, if actual revenue is sufficient.

We use a formula approved by the WCCLS Executive Board to calculate this, and make allocations annually each fall.

Funding for library operations distributed by WCCLS in FY19-20

(Pool 1, Pool 2, and Jump Start Operating Funds)

	Aloha	Banks	Beaverton	Cedar Mill	Cornelius	Forest Grove	Garden Home
Pool 1	\$ 515,000	\$ 183,256	\$ 6,000,099	\$ 4,350,447	\$ 224,791	\$ 876,456	\$ 452,368
Pool 2	\$ 20,669	\$ 17,420	\$ 90,016	\$ 73,859	\$ 17,827	\$ 24,209	\$ 20,056
JSOF		\$ 43,142		\$ 89,860	\$ 322,249		\$ 88,000
	\$ 535,669	\$ 243,818	\$ 6,090,115	\$ 4,514,166	\$ 564,867	\$ 900,665	\$ 560,424

	Hillsboro	North Plains	Sherwood	Tigard	Tualatin	West Slope	TOTAL
Pool 1	\$ 5,468,251	\$ 184,361	\$ 925,479	\$ 3,791,316	\$ 1,683,526	\$ 870,013	\$25,525,363
Pool 2	\$ 84,807	\$ 17,431	\$ 24,689	\$ 52,758	\$ 32,114	\$ 24,146	\$500,000
JSOF							\$543,251
	\$ 5,553,058	\$ 201,792	\$ 950,168	\$ 3,844,074	\$ 1,715,640	\$ 894,159	\$ 26,568,615



WCCLS Vision and Mission:

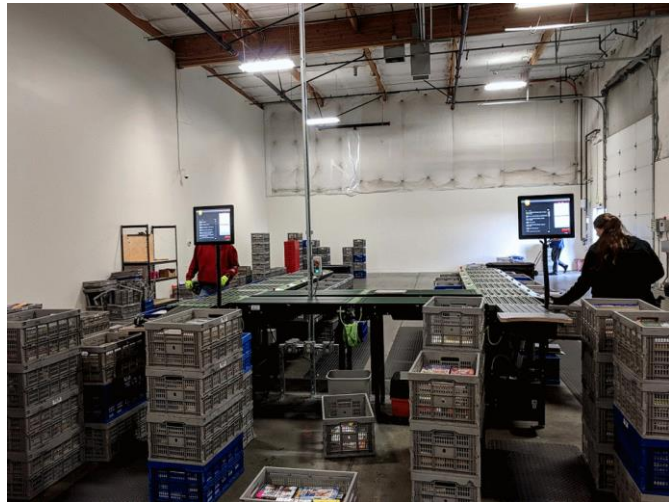
In order to create a curious, engaged, and literate community where everyone is welcome and thrives, WCCLS partners with local public libraries to connect people to excellent countywide library services.

WCCLS does this by providing:

- **Funding:** We secure and distribute the primary funding for countywide public library service.
- **Infrastructure Support:** We provide technology and logistics support to ensure equitable access to library materials and services.
- **Direct Service:** We provide services to the public that are more effectively delivered at a county level.
- **Marketing & Communications:** We develop and deliver messaging that drives awareness of the value that WCCLS and libraries provide to their communities.
- **Leadership & Training:** We identify common goals and provide training resources to ensure a consistently exceptional patron experience.



WCCLS support: materials movement



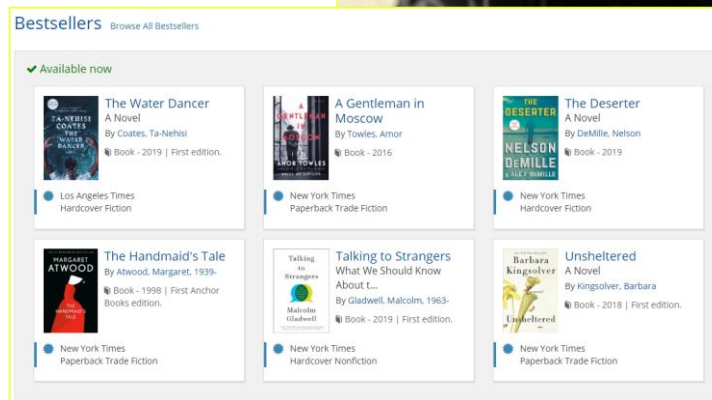
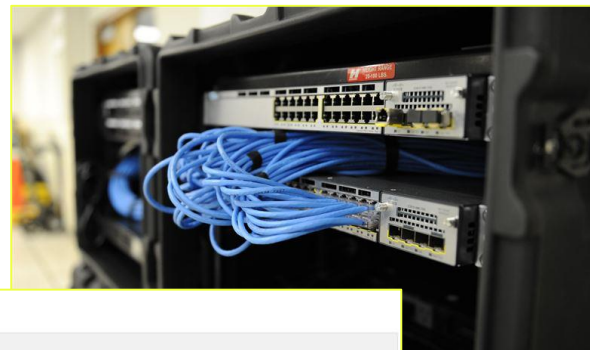
7 days / week

10,000 items
sorted daily

Over 50,000
miles driven
annually

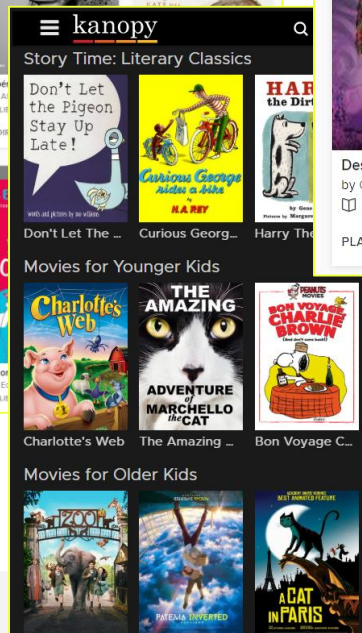
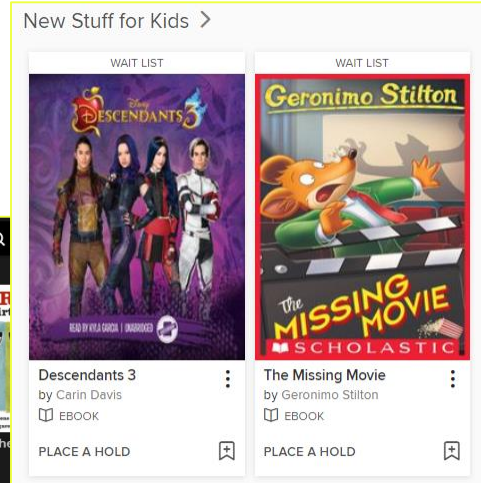
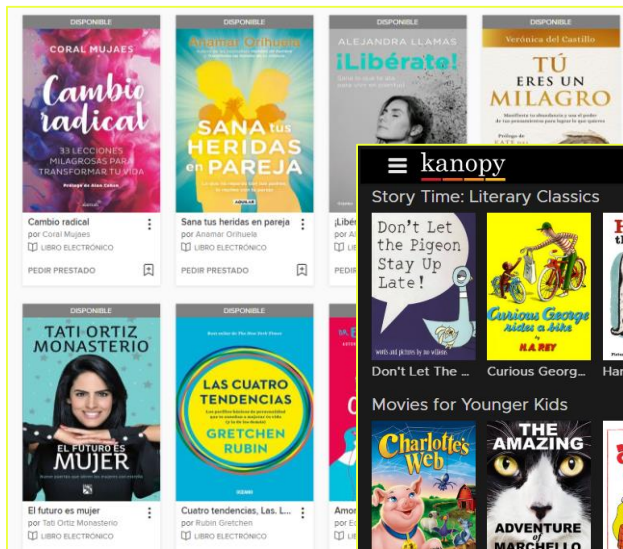
WCCLS support: technology infrastructure

- Broadband for public internet access, wireless printing, internet filtering
- Network infrastructure and support
- Library inventory management system
- Online search interface, countywide events calendar, online fine payment



WCCLS support: countywide collections

- Extra copies of popular physical books to reduce wait times
- E-books and audiobooks
- Streaming video (documentaries, kids content, and classics)
- Digital learning and research tools
- Online homework help for students



WCCLS support for member libraries

- Delivery of library materials to people who are homebound or live in care facilities
- Books and materials for children's storytimes
- Access to books for in-home childcare providers



Cooperative statistics at a glance: FY18-19

1.6 million items in the shared collection of books, movies, music and more

8.8 million searches in the catalog

11.2 million checkouts: 1 million of these are **digital** books

3.8 million library visits

1,083,538 hours on wifi (or **123 years'** worth of time!)

8,497 kids programs: 284,088 attended

2,221 programs for adults: 44,305 attended

128,485 volunteer hours contributed by the community